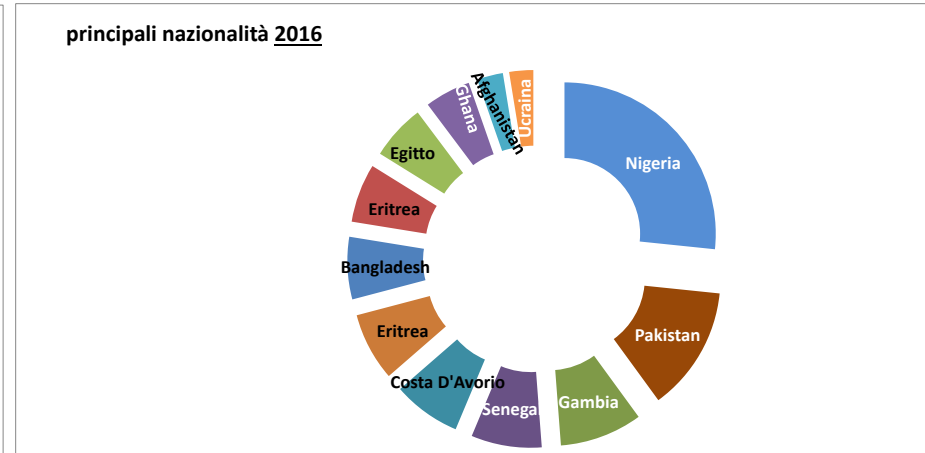
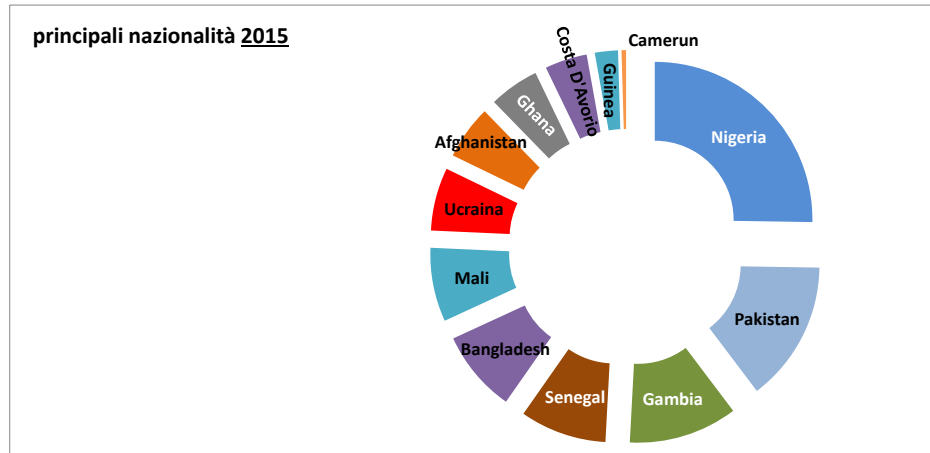
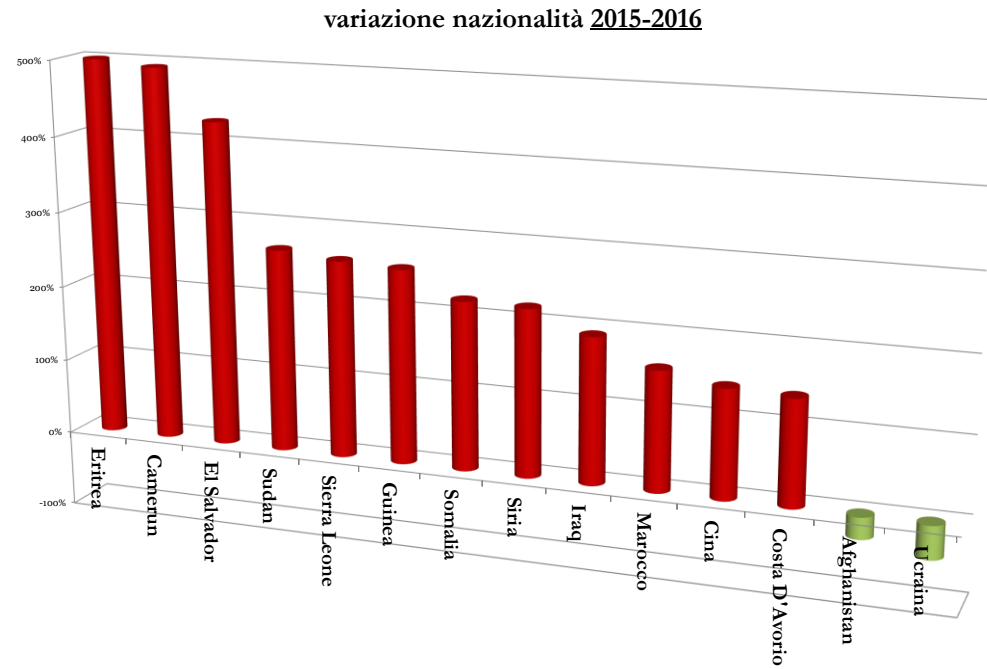


Dati asilo 2015 - 2016

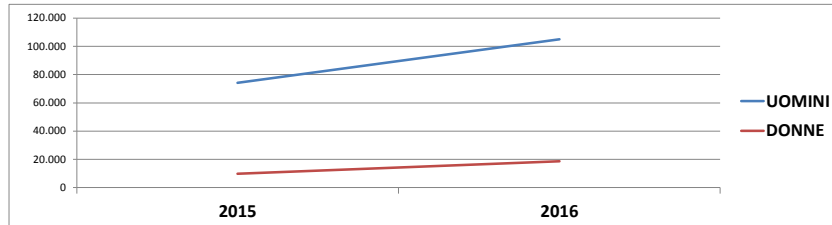
	2015	2016	variazione %
Totale richiedenti	83.970	123.600	47%
Nigeria	18.174	27.289	50%
Pakistan	10.403	13.660	31%
Gambia	8.022	9.040	13%
Senegal	6.386	7.723	21%
Eritrea	729	7.472	925%
Costa D'Avorio	3.115	7.459	139%
Bangladesh	6.056	6.818	13%
Mali	5.455	6.438	18%
Guinea	1.704	6.057	255%
Ghana	3.697	5.018	36%
Afghanistan	3.975	2.852	-28%
Ucraina	4.653	2.628	-44%
Somalia	747	2.404	222%
Camerun	335	1.987	493%
Siria*	497	1.590	220%
Marocco	604	1.556	158%
Iraq	527	1.538	192%
El Salvador	206	1.087	428%
Cina	358	871	143%
Burkina Faso	412	850	106%
Egitto	589	787	34%
Guinea - Bissau	682	740	9%
Togo	299	658	120%
Sierra Leone	172	618	259%
India	250	555	122%
Sudan	137	503	267%
Altri	5.786	5.402	-7%

* inclusi i reinsediati e i giunti con il corridoio umanitario dal Libano

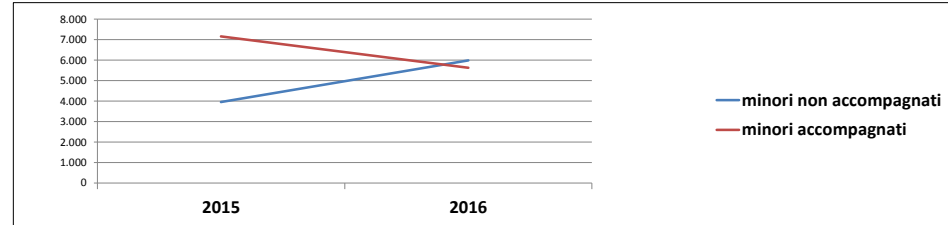


Dati asilo 2015 - 2016

	2015	2016
UOMINI	74.250	105.006
DONNE	9.720	18.594



	2015	2016
minori non accompagnati	3.959	5.984
minori accompagnati	7.168	5.639

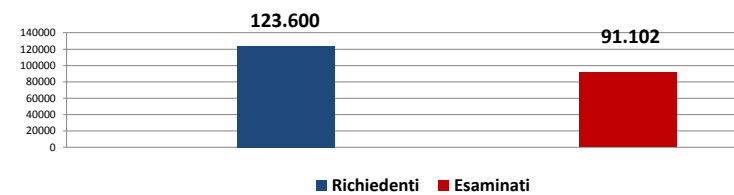


Esiti richieste d'asilo 2016

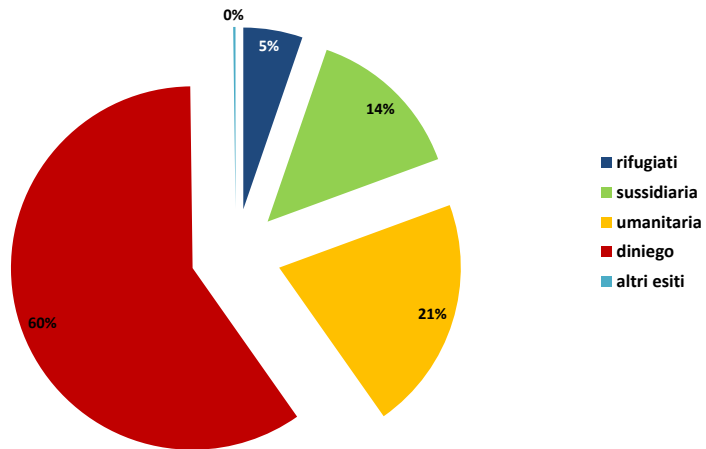
	2015	%	2016	%
rifugiati	3.555	5%	4.808	5%
sussidiaria	10.225	14%	12.873	14%
umanitaria	15.768	22%	18.979	21%
diniego	41.503	58%	54.254	60%
altri esiti	66	0%	188	0%
Totale esaminati*	71.117	100%	91.102	100%

*esaminati nell'anno, indipendentemente dalla data di richiesta asilo

richiedenti /esaminati (2016)



percentuali esiti 2016



tipologie esiti 2016

